

Is this email not displaying correctly? View it in your browser.

Cheltenham & Tewkesbury Cycling Campaign

Campaign Updates from October

Latest updates from the Cheltenham & Tewkesbury Cycling Campaign, your voice for a cycle friendly North Gloucestershire

Here's all we've been up to during the month of October, and some important actions you can take in November.

If you can't open the links here, you'll find a pdf copy of the newsletter to download online, accessed from the bottom footer of any page on our website.

Social@Deya (6th Nov) / *New* AGM Date (17th Nov)

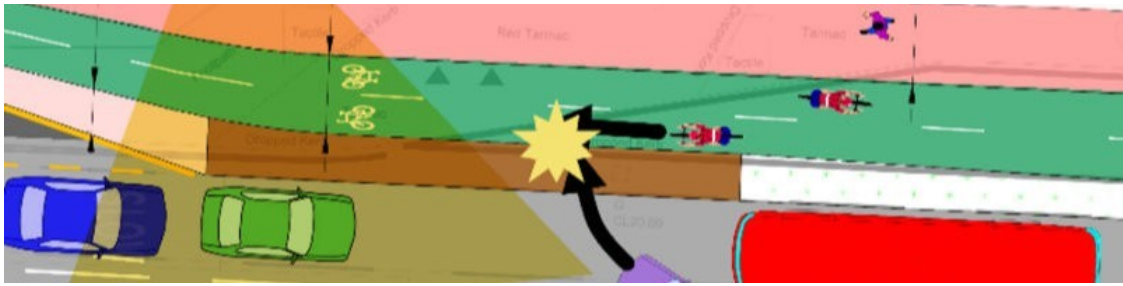


Our annual general meeting is still happening on Zoom, but has been rescheduled to **17th November**. Those with membership should receive their invitation via email this week. Please contact membership@cyclecheltenham.org.uk if you have not received them by 7 November.

We're also having a social meetup at **2-4pm this Sunday, 6th November at Deya Brewery** on the Lansdown Industrial Estate. It's a chance to connect with others interested in cycling in Cheltenham, so do please come along.

Finally, our AGM is a time to look at our committee membership in the round. We are particularly conscious that we have struggled to represent **Tewkesbury** as well in the last year as we haven't had a specific rep able to attend. If you're interested in joining the committee, particularly if you live in Tewkesbury, please get in touch.

Campaign proposes an alternative solution for the Longlevens cycle route



We've submitted our response to the Longlevens cycle route consultation. Thank you to those who provided thoughts, and who will have personally responded to the consultation directly.

We provided a detailed technical critique, with our key recommendation being that the attempt to squeeze in substandard cycleways immediately adjacent to busy traffic lanes should be abandoned in favour of a two way cycleway on the south side of the carriageway, and a low traffic route via Kenilworth Avenue. You can read our full critique and response on the website.

[Read our full Longlevens Response](#)

[Link: <https://www.cyclecheltenham.org.uk/wp/a-better-way-our-comments-on-the-longlevens-b4063-cycleway-scheme/>]

Have your say on the first stage of a mini-Holland consultation for Cheltenham



Gloucestershire County Council is in the early stages of consultation for introducing a 'Mini-holland' scheme along the Honeybourne Line corridor.

This is an early conversation, working out if Cheltenham residents have a desire to see changes made and where these changes should be. The national mini-Holland guidance sets a high standard, so we are going to be following this closely.

In the meantime, it's vital local people have their say on the changes they want to see to tackle motor vehicle dominance. The consultation closes on Wednesday 16 November. We'll be discussing it at our social meetup next week if you're coming along.

[Have your say on the mini-Holland scheme](#)

[Link: <https://www.cyclecheltenham.org.uk/wp/mini-holland-chelt/>]

Show your campaign support with our new stickers



We're delighted to announce that we now have our campaign support stickers in stock. If you'd like to help us by raising awareness and showing support for the campaign, you can stick these on your bike, basket, helmet, laptop, or whatever else takes your fancy!

They're free to members and local residents, so pop onto the website and let us know if you'd like to receive some.

[Order your free CTCC campaign stickers](#)

[Link: <https://www.cyclecheltenham.org.uk/wp/cheltenham-tewkesbury-cycling-campaign-membership-sticker/>]

Bamfurlong Lane M5 Overbridge Closure (7th Nov)



National Highways is closing the bridge over the M5 on Bamfurlong Lane adjacent to the airport from the end of this week for over a year.

This repeats the level of severance we saw last year when Brookfield Road was similarly closed, and the diversionary route is similarly undesirable. We have raised a complaint with National Highways that they should have better considered the needs of pedestrians and cycle users when planning the works, which you can read on our website.

[Read our complaint to National Highways](#)

[Link: <https://www.cyclecheltenham.org.uk/wp/national-highways-m5-overbridge-closure-diversion-complaint-cycling-pedestrians/>]

What's a great addition to Christmas lists this year?



We're thinking ahead to a special website post at Christmas recommending gifts for cycle users that they'd actually like to receive (and not just another pair of cheap lights).

We'd love to include recommendations from our members and contacts, so if you've got an item that you think others would love to receive from Santa this year, please drop us a note (ideally with a photo) to secretary@cyclecheltenham.org.uk.

Watch out for the list later this year!

Add your voice as a member



Our thanks to the over 130 people who currently support us as a cycling campaign. If you're not already a member, why not join us today?

We are totally volunteer-led, with all our time given for free. The small membership fee helps us run our website, prepare and print resources, and run events that raise the priority of cycling across Gloucestershire.

The more members we have, the richer the experiences we can share, and the more significant our voice becomes on behalf of local cyclists.

Support us as a member for only £5 per year

[Link: <https://www.cyclecheltenham.org.uk/wp/about-ctcc>]

You are receiving this email because you signed up for our newsletter or are a member of the cycling campaign. You can unsubscribe at any time using the link below.

Visit us on social media:



If you want to unsubscribe, [click here](#).